

FIV2022: how to come to EDF Lab Paris-Saclay

Venue

EDF Lab Paris-Saclay, “Azur” building (entrance building).

7 bd Gaspard Monge, 91120 Palaiseau, <https://goo.gl/maps/QzGF2sb2V5DJu3My9>

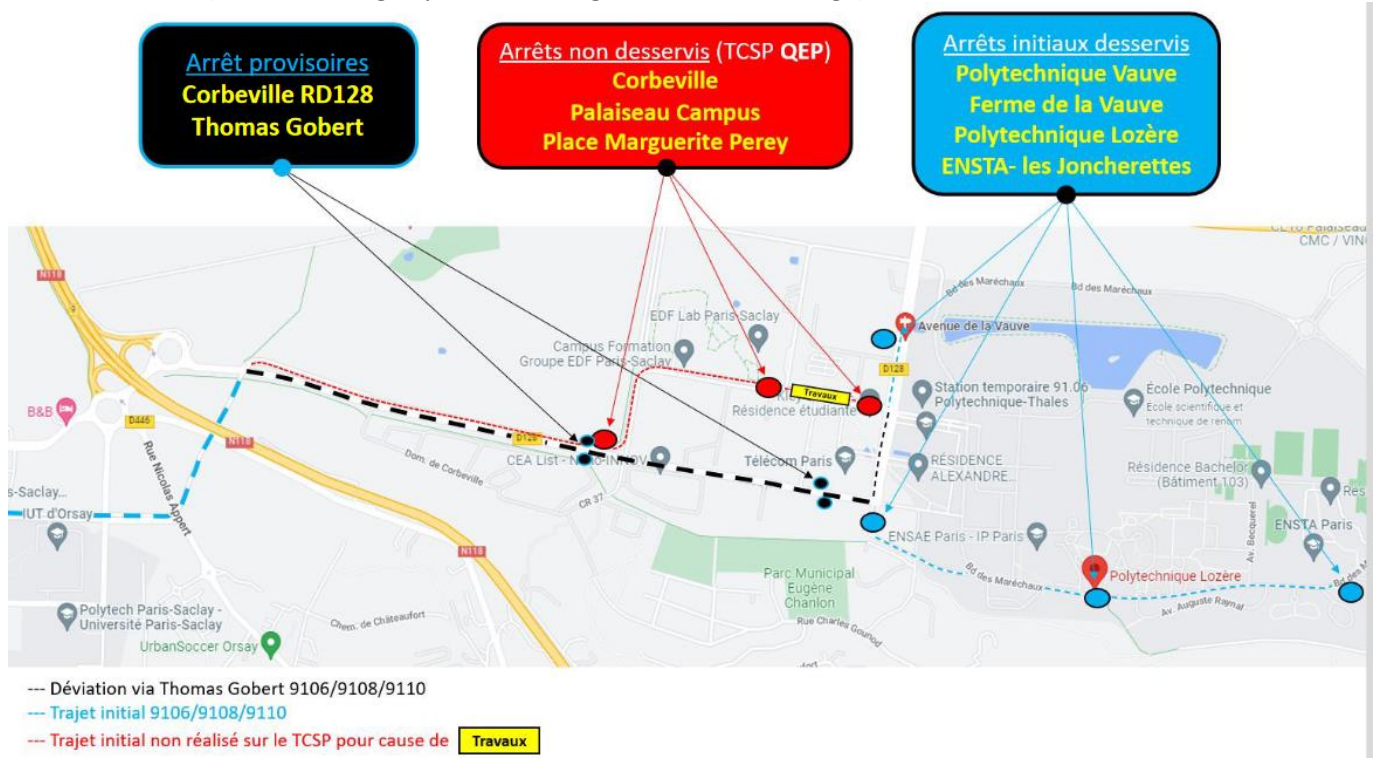
Rooms: Auditorium + Amphi



Public transit

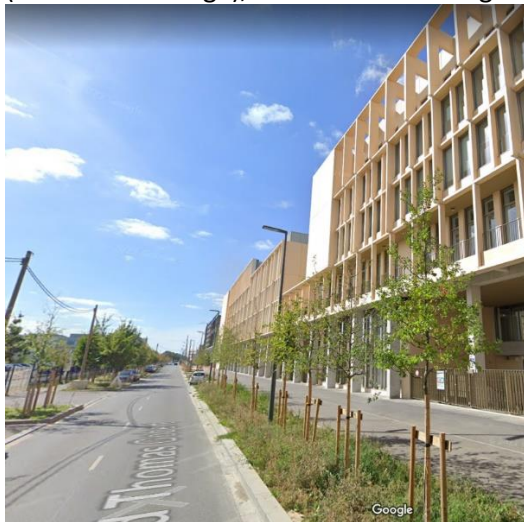
RER B Massy-Palaiseau then Bus 91.06.

Warning ! **Construction works** ongoing, our bus stop is currently unavailable, please alight at the bus stop “**Thomas Gobert**” instead (close to the light-yellow building of “Telecom” college) then walk 5min.



(on the map, the bus arrives from the right, from Massy-Palaiseau)

If you see this light-yellow building
("Telecom" college), then it's time to alight.



Pedestrian path from Thomas Gobert bus stop to the conference:



Car park

Public car park EFFIA Palaiseau Monge (it's a bit expensive but it's the best we can offer).

2 rue Jean Pacilly, 91120 Palaiseau, <https://goo.gl/maps/pC5c2xKF6RqdQYMBA>

Beware of closed streets because of construction works:

